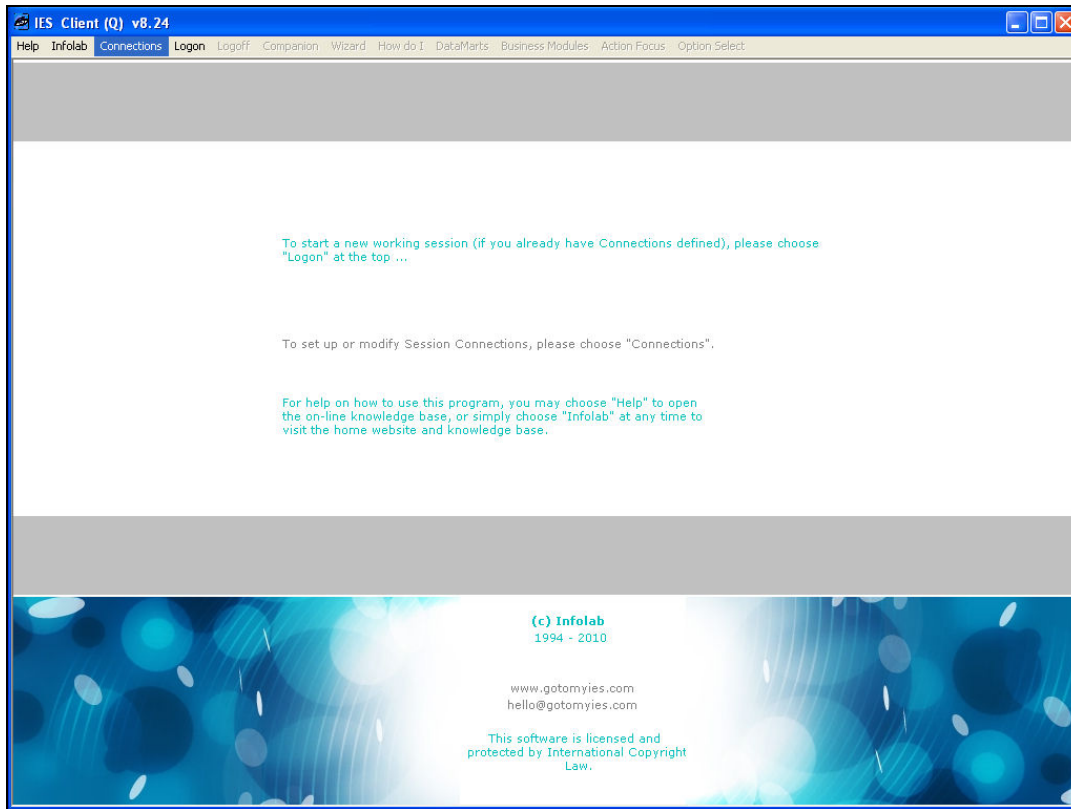


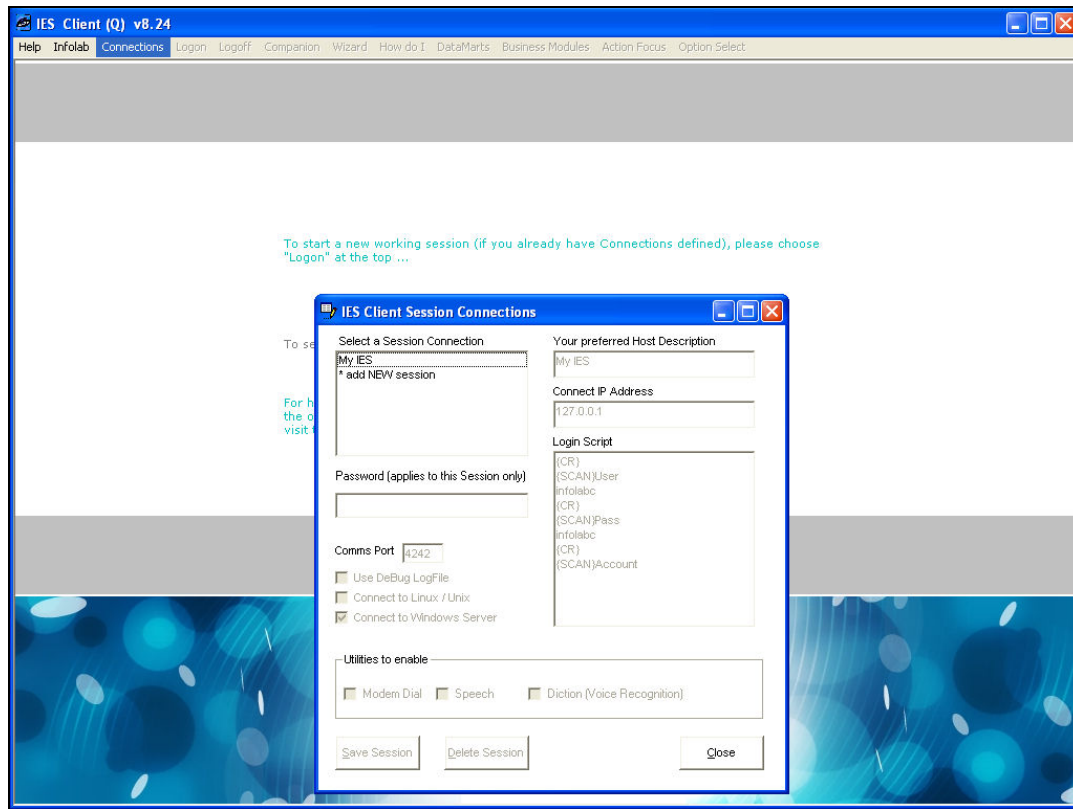
## Slide 1

Slide notes: Once we have opened the IES Client from a shortcut on the desktop, we can usually choose "Logon". If we have no Connections yet or want to add another Connection, then we can choose "Connections".



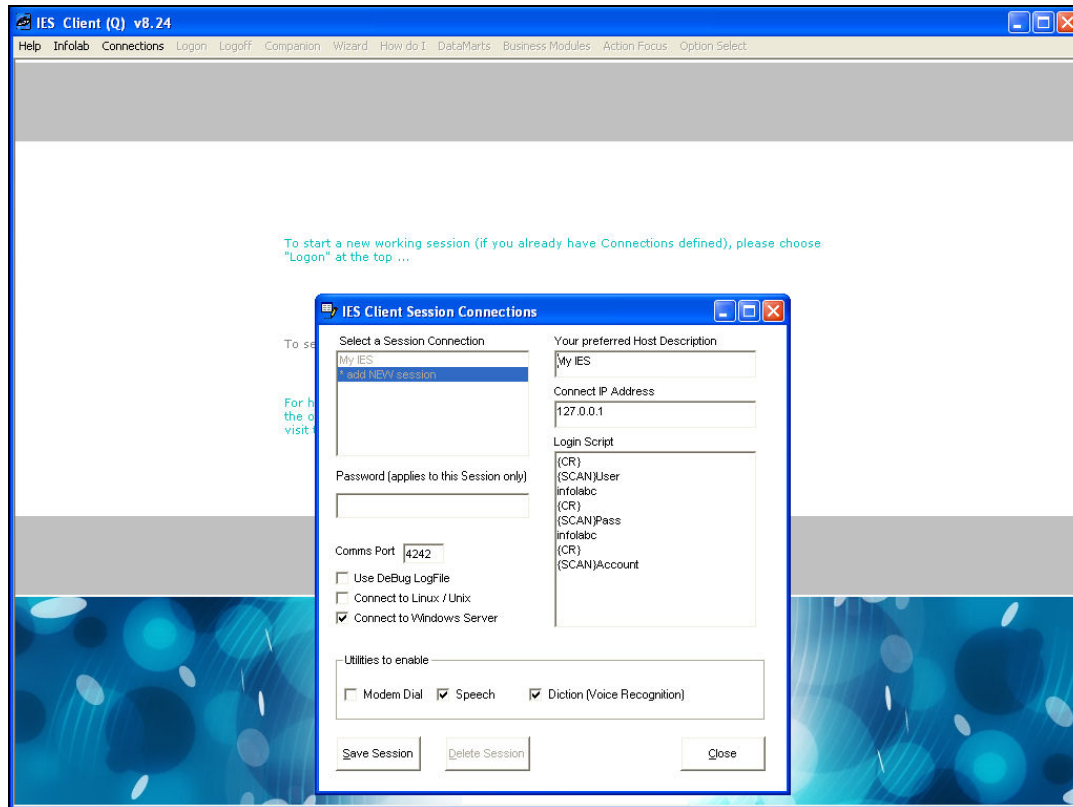
## Slide 2

Slide notes: A Connection is a set of instructions how to connect to a particular Server, and we can use 1 or many.



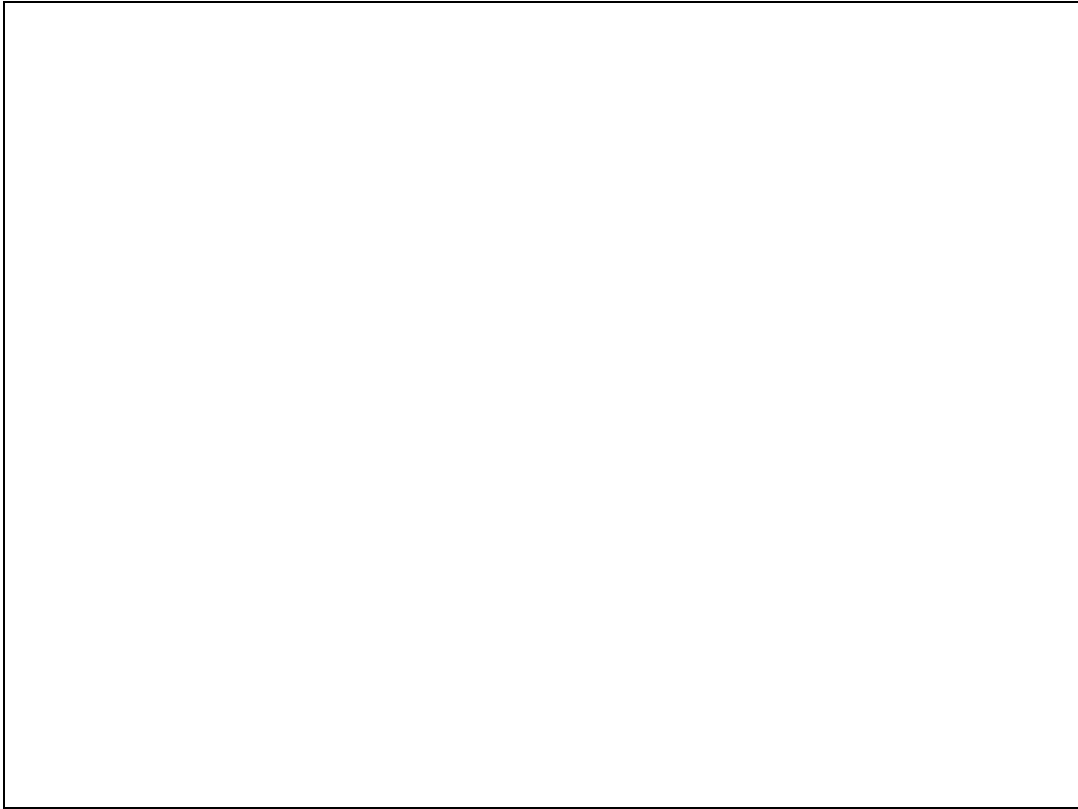
Slide 3

Slide notes: To add a new Connection, just dbl-click "add new session".



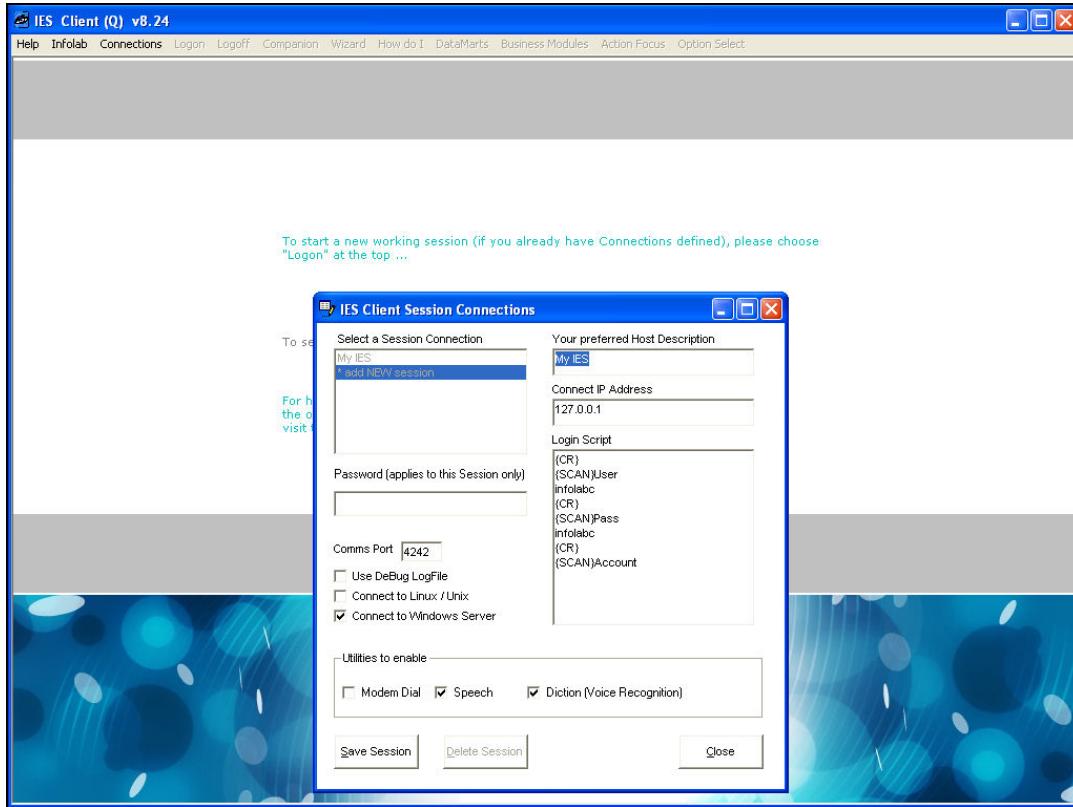
Slide 4

Slide notes: It is a good idea to give a Connection a name to recognize it by.

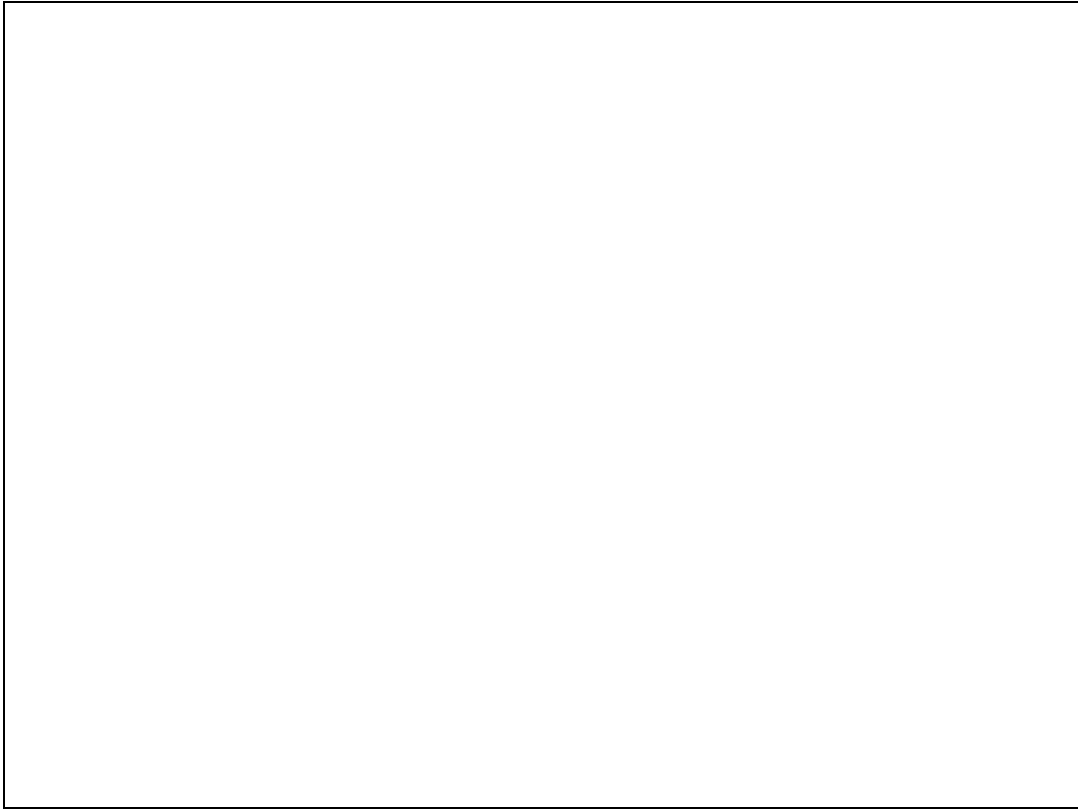


Slide 5

Slide notes:

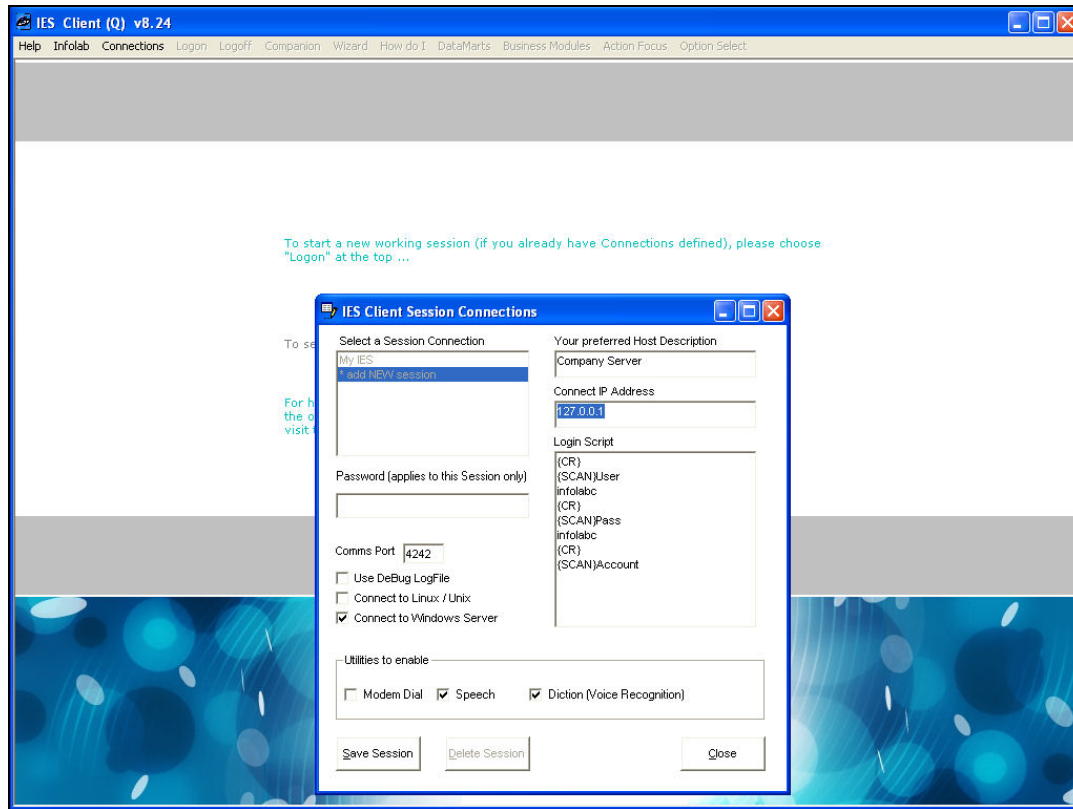


Slide 6  
Slide notes:



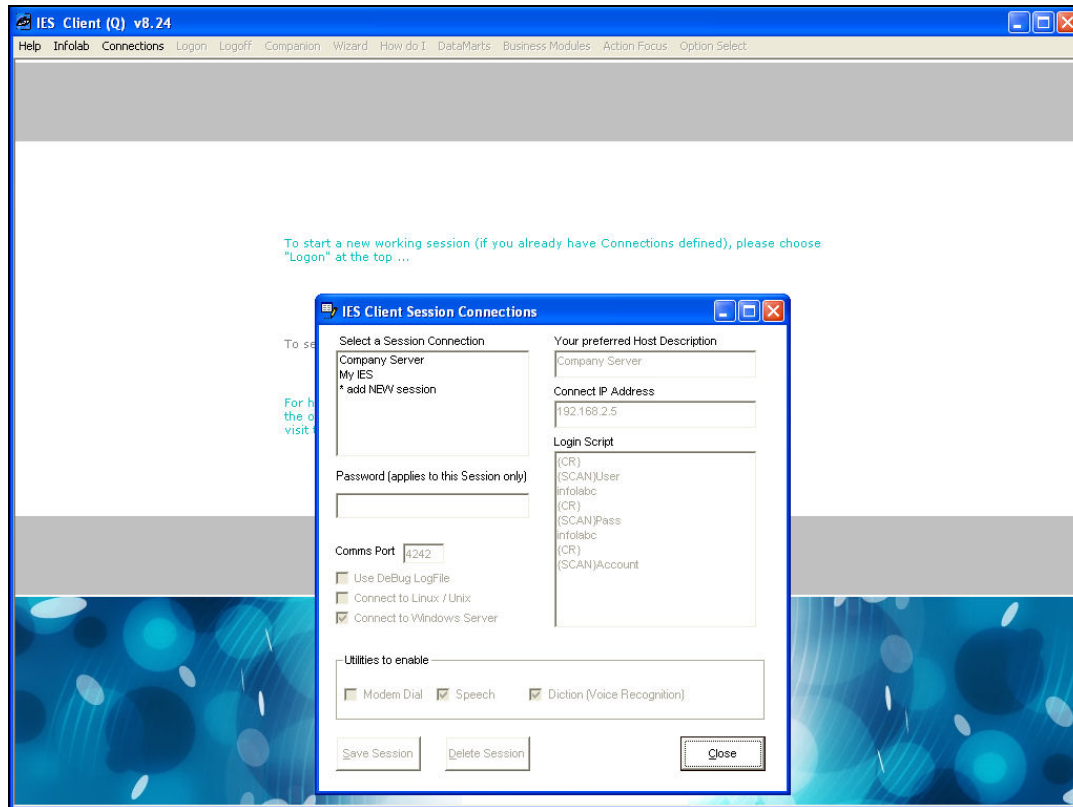
Slide 7

Slide notes:



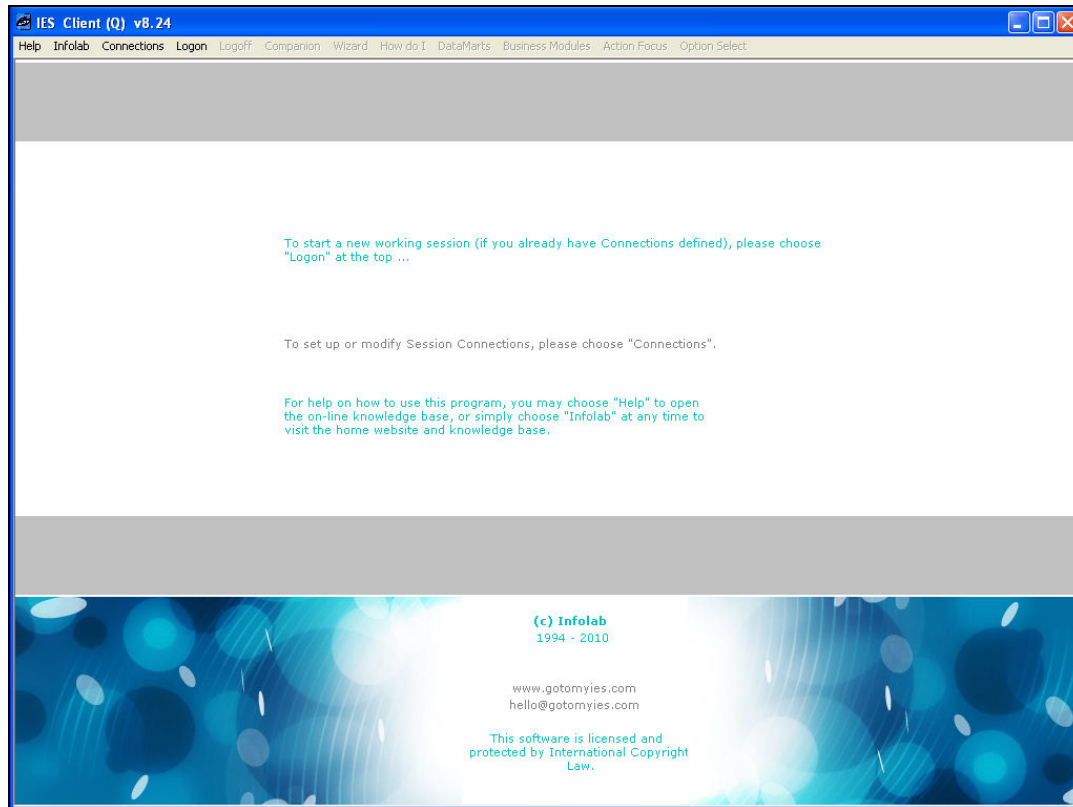
## Slide 8

Slide notes: And a Server usually has a specific IP address where it can be found. This IP address can be on the local network or anywhere in the world if we are connected to the internet.



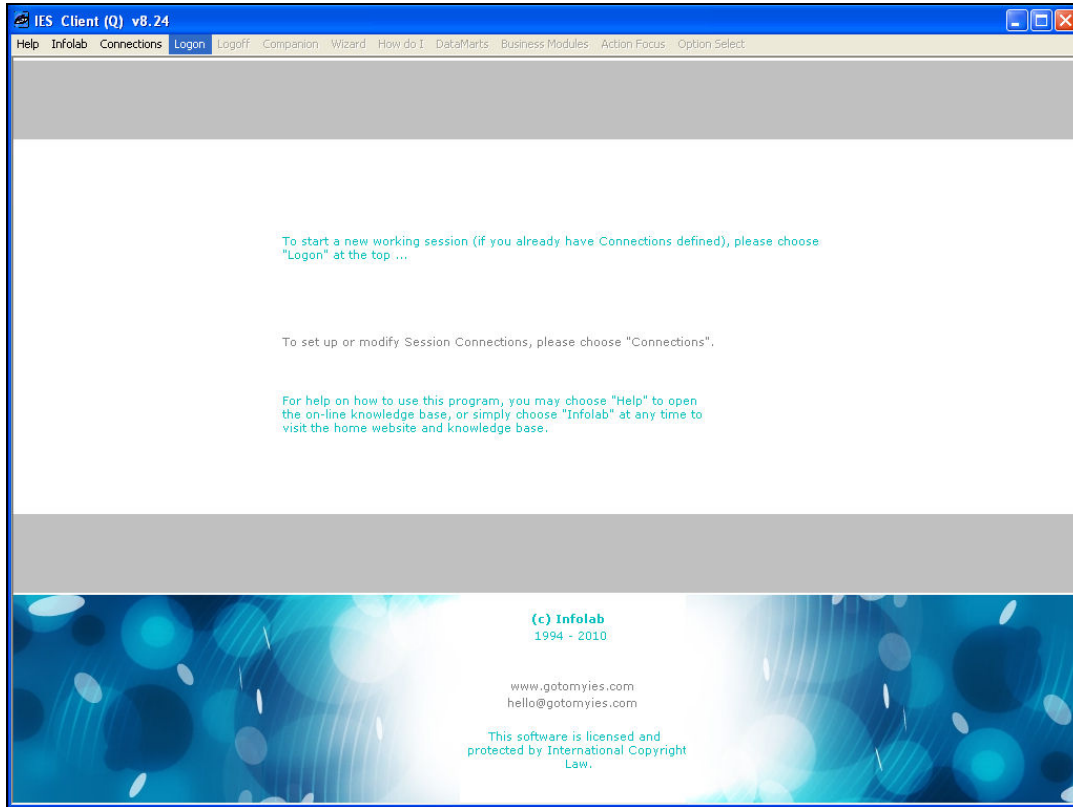
## Slide 9

Slide notes: The other defaults for the connection, as provided by the system, can be left untouched.



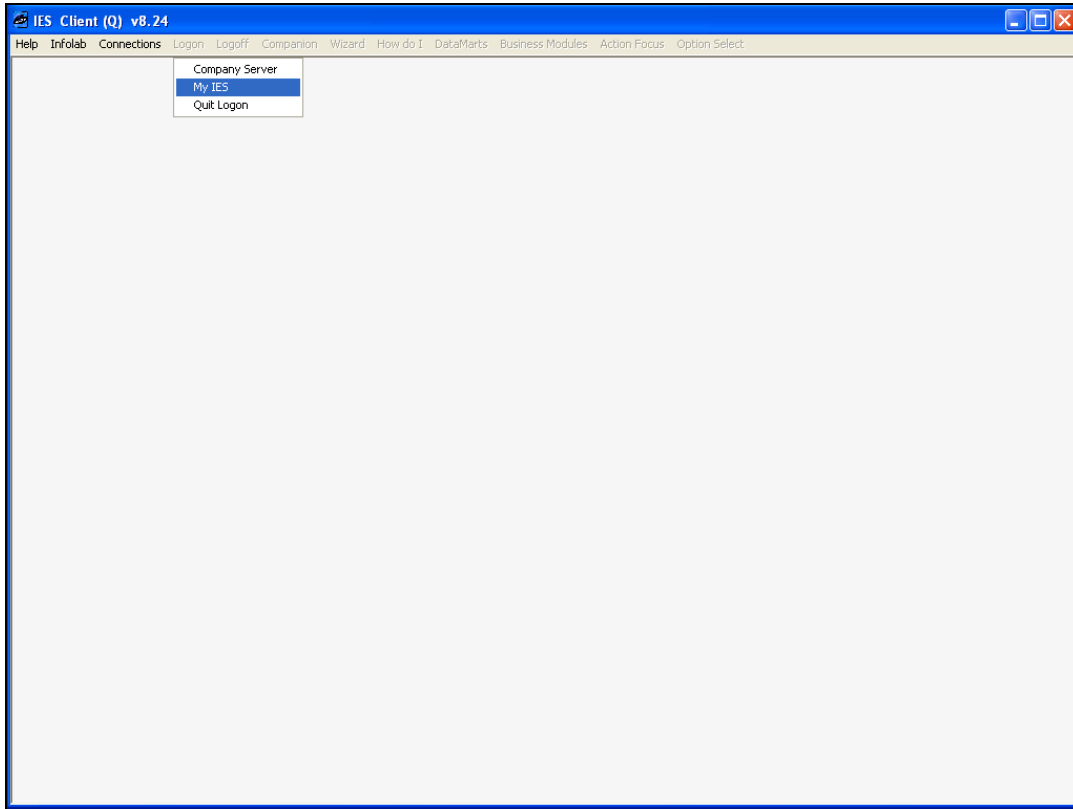
Slide 10

Slide notes: To connect to an IES service, we choose "Logon".



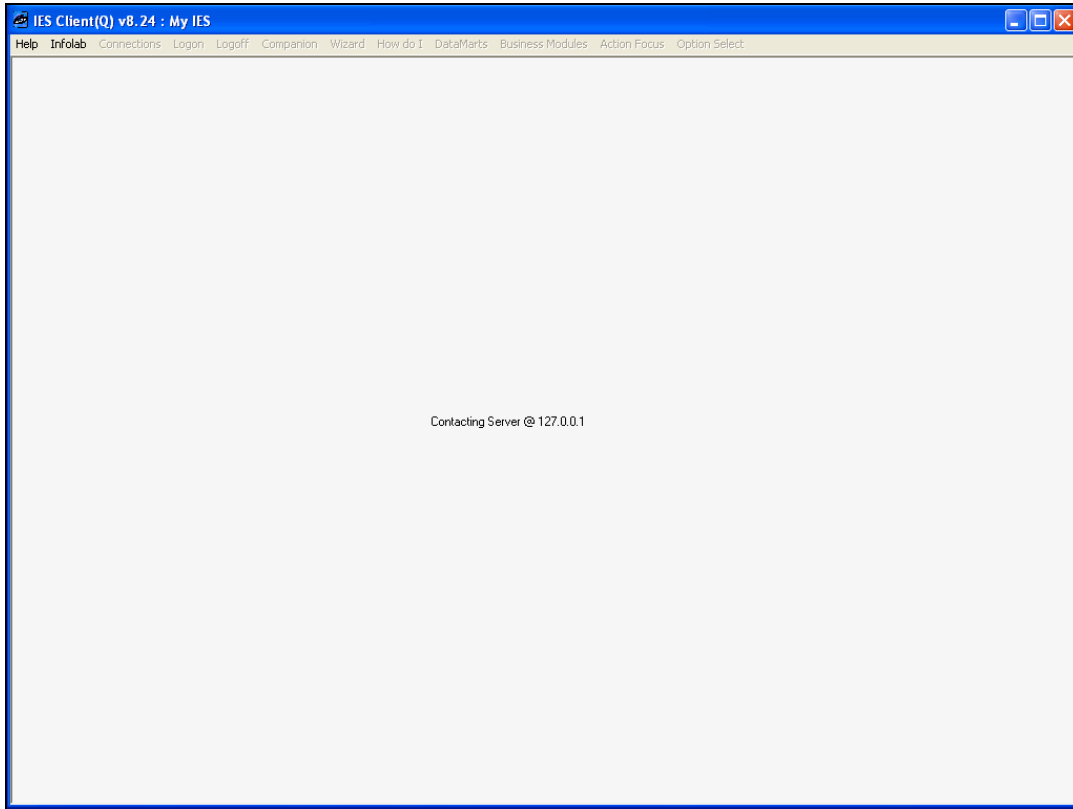
Slide 11

Slide notes:



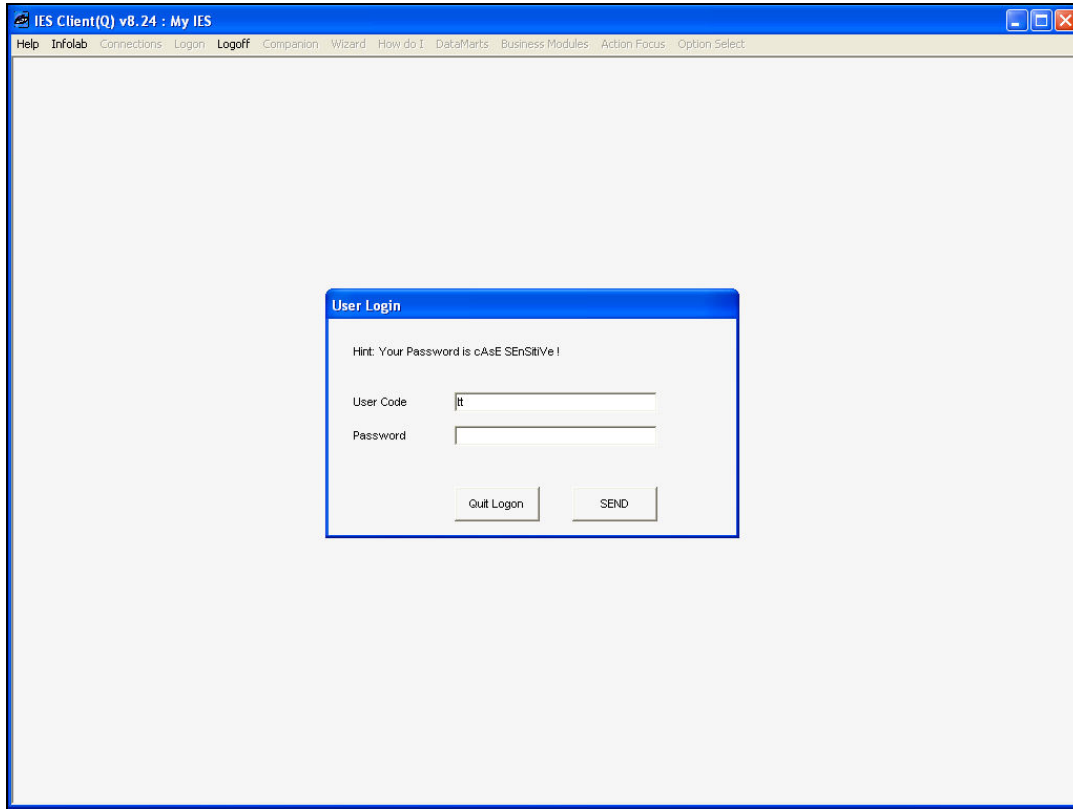
Slide 12

Slide notes: And we choose the connection to use.



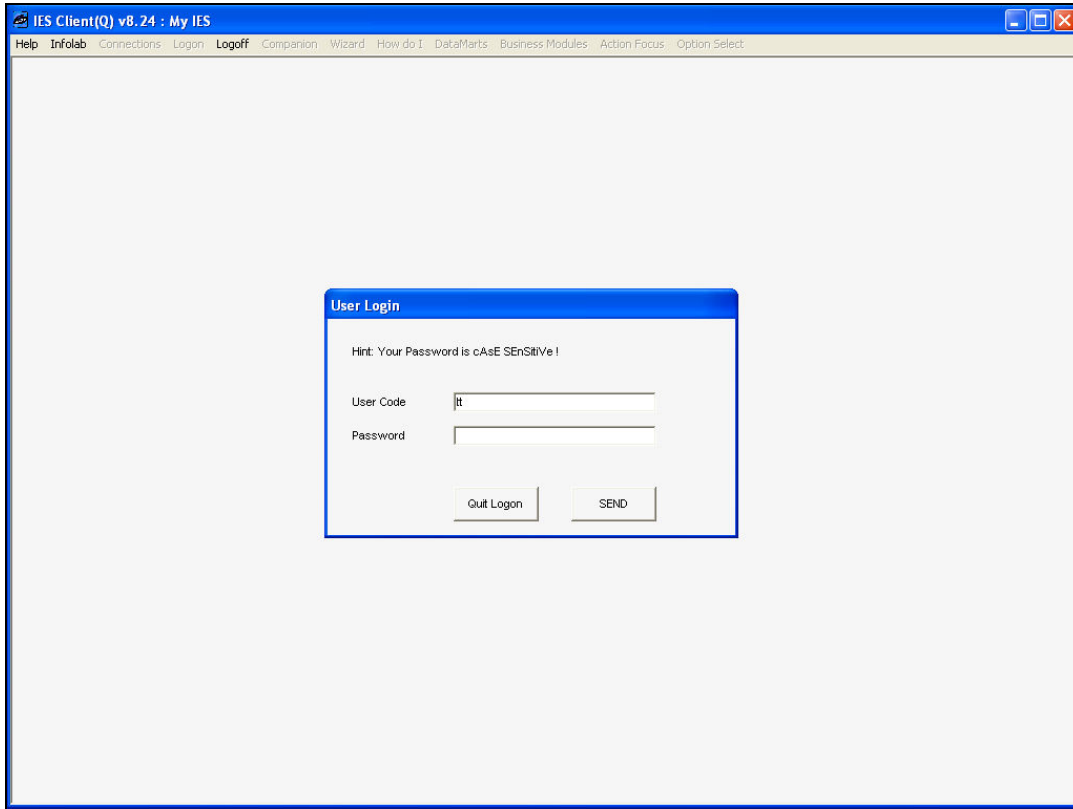
Slide 13

Slide notes:



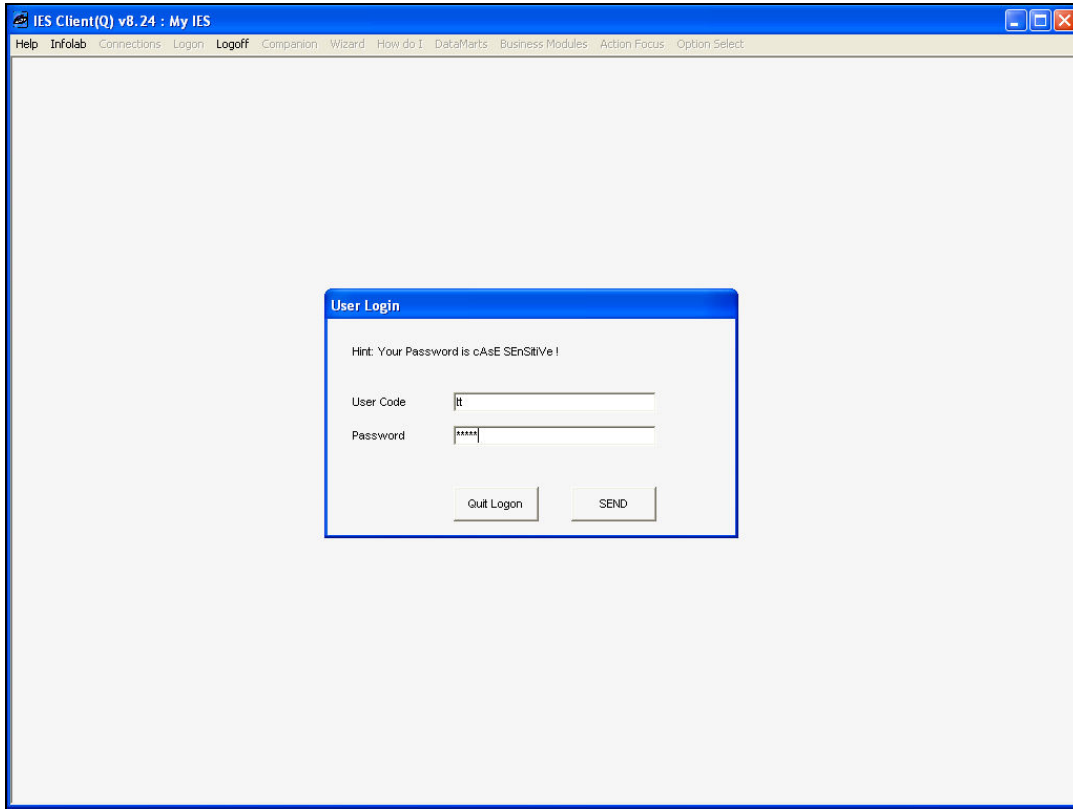
Slide 14

Slide notes: For any IES service, we need a User Code and Password to gain entry.



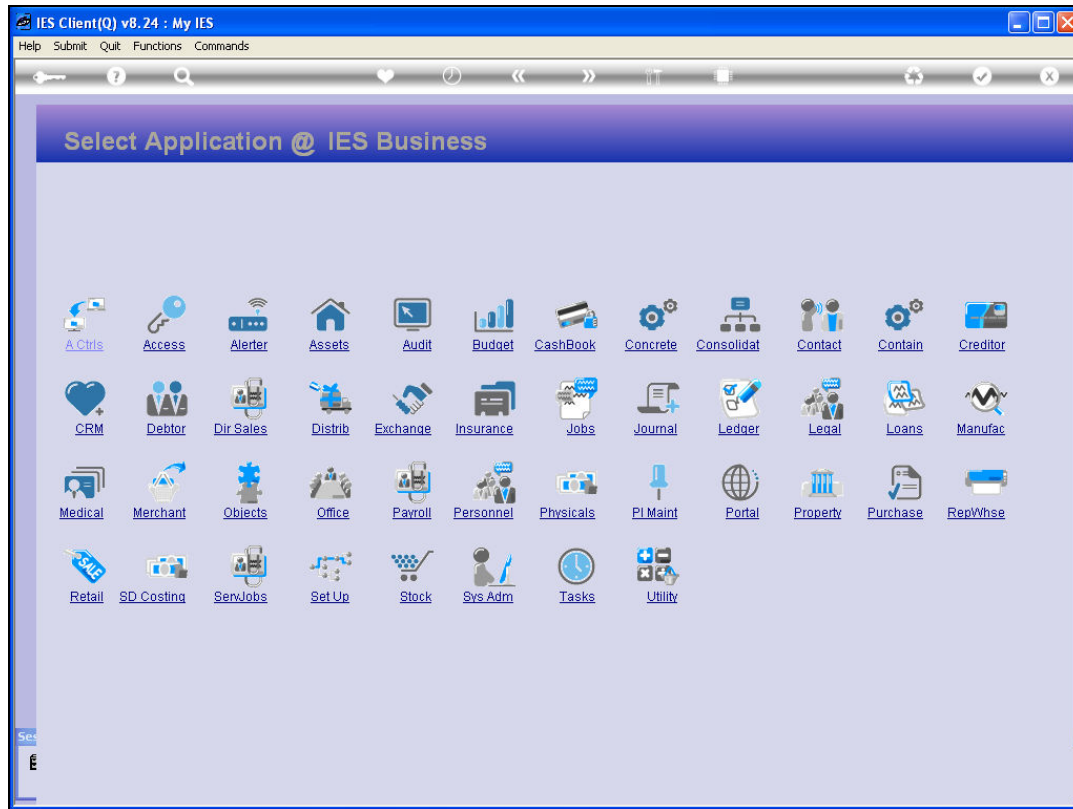
Slide 15

Slide notes:



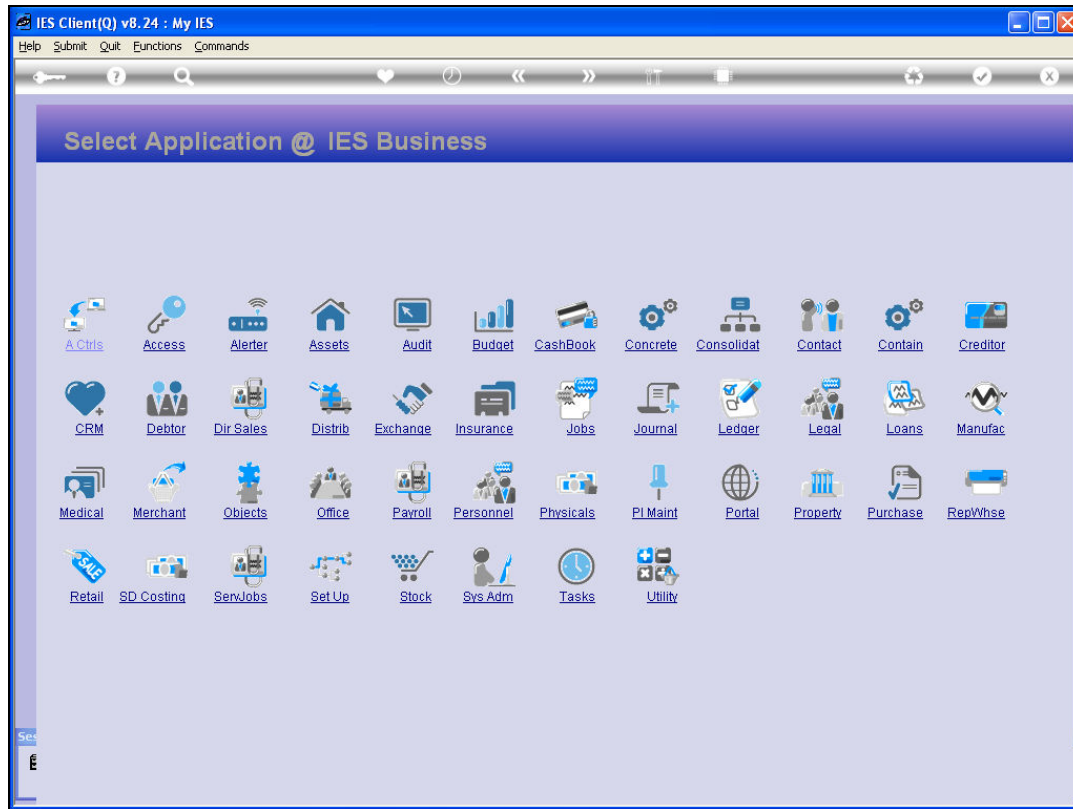
Slide 16

Slide notes:



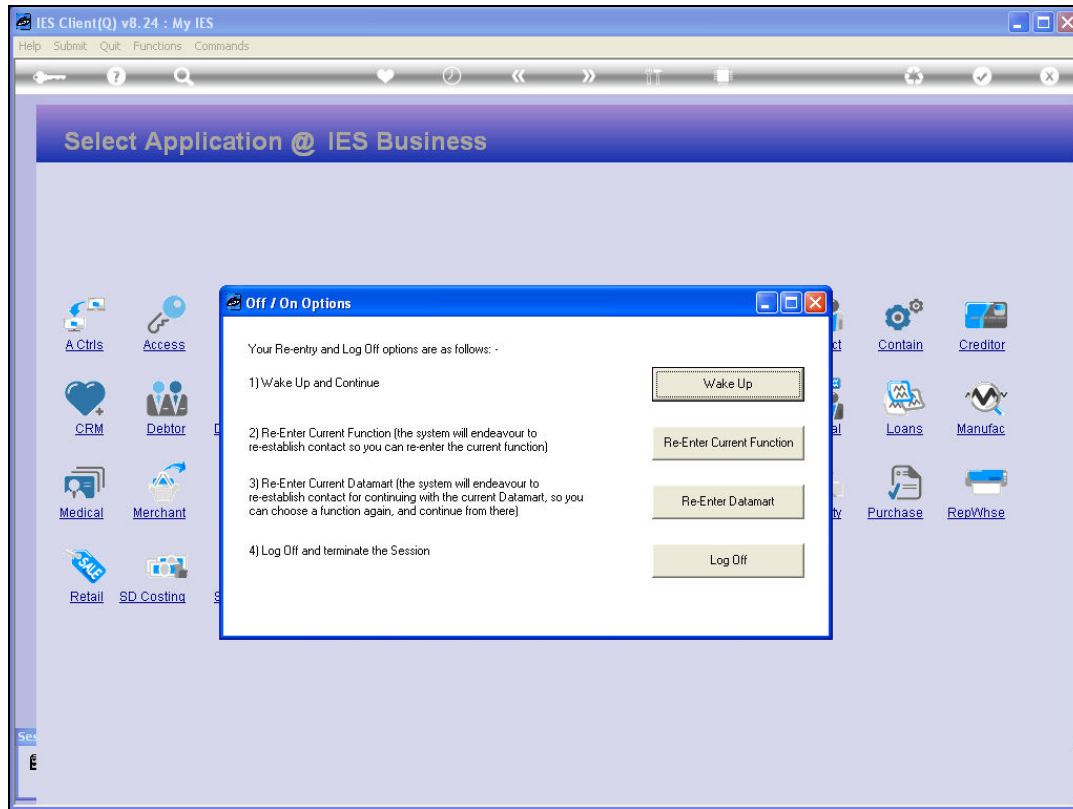
## Slide 17

Slide notes: Once we connect successfully, the system will load our 1st menu, and we can tell the system where to start by using our "Preferences" option. We discuss the Preferences in a separate tutorial.



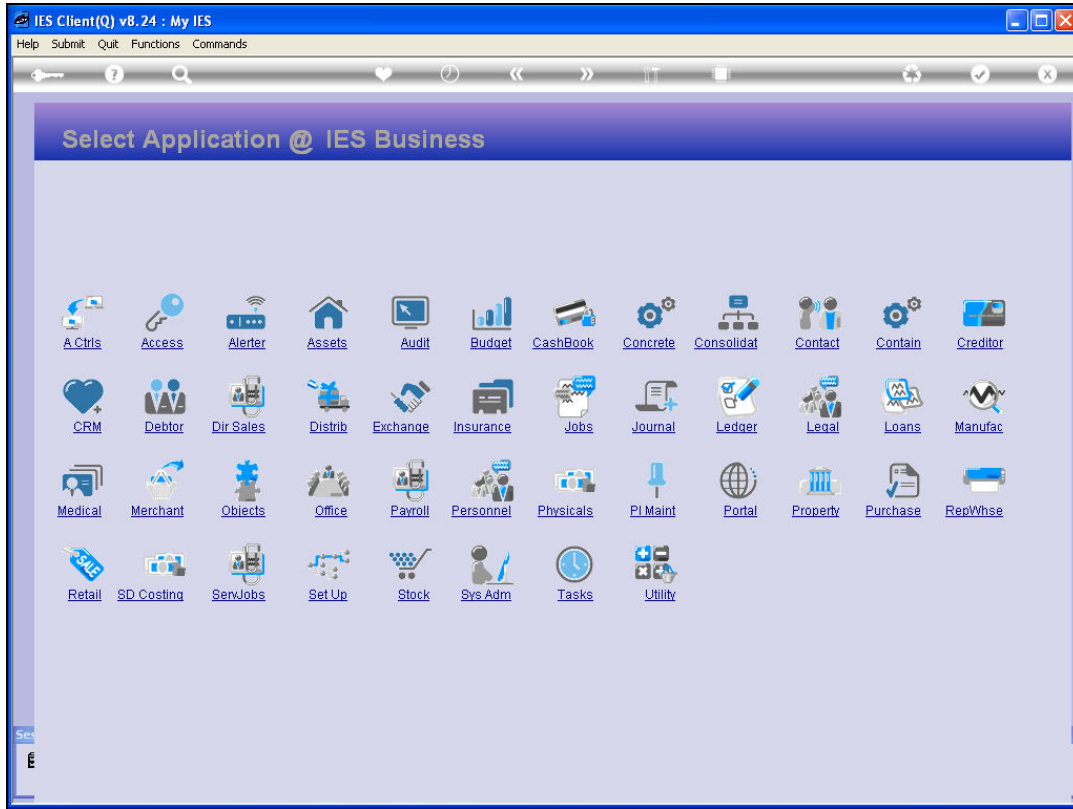
## Slide 18

Slide notes: Whenever we wish to end a session, we can use the "Logoff" icon, of the "Logoff" command at the top menu, or we can just choose the "close" icon on the IES Client window.



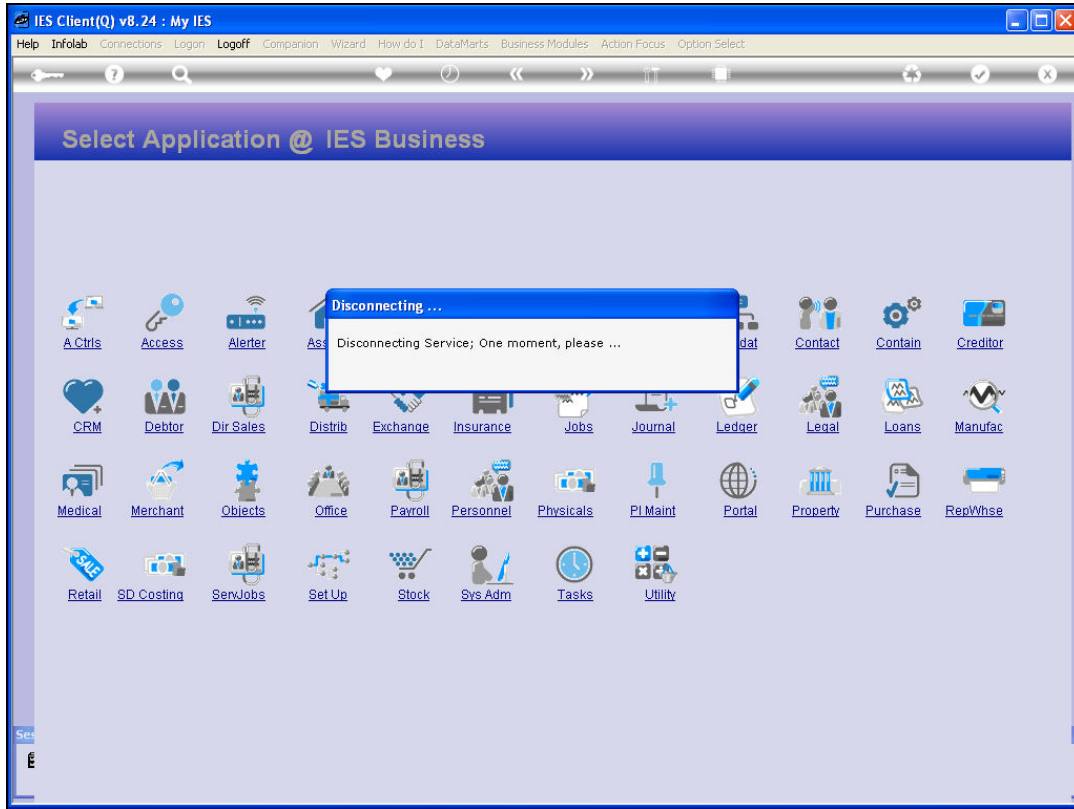
### Slide 19

Slide notes: It is always good to choose "Logoff" if we will not be using the system for some time, as a proper log off will release the User seat and make it available for use by anyone who needs to use the system.



Slide 20

Slide notes:



Slide 21

Slide notes: IES Client will then disconnect.